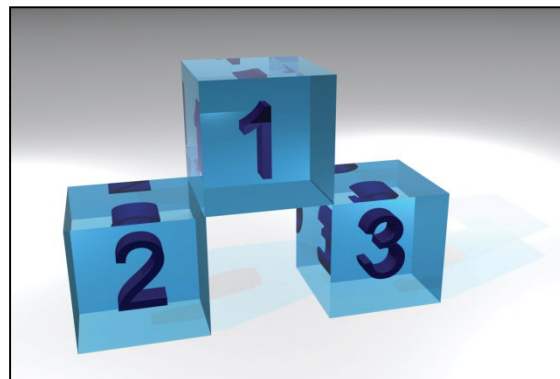


If my organization uses PMI®, then why should I consider being PRINCE2™?

Outperform

An Accredited Consulting Organisation



- “We use PMI means”
 - the organisation uses the project management terms, definitions and techniques described in PMBOK® Guide
 - the projects managers are trained by PMI® accredited educators and are PMP® or CAPM® qualified or en route to being qualified
 - representatives of their organisation attend PMI® chapter meetings and contribute to SIGs
- “We are PRINCE2 means”
 - the organisation has a project management method with a gated process, role definitions and templates based on PRINCE2™
 - the project managers hold PRINCE2™ Practitioner certificates
 - PMs may also use the complementary methods of MSP and M_o_R®

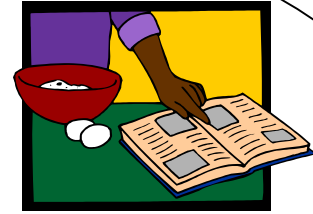
Cooks & Recipes

- "**Cooking** is an act of preparing food for eating. It encompasses a vast range of methods, tools and combinations of ingredients to improve the flavour or digestibility of food. It generally requires the selection, measurement and combining of ingredients in an ordered procedure in an effort to achieve the desired result. Constraints on success include the variability of ingredients, ambient conditions, tools and the skill of the individual cooking. Cooking requires applying heat to a food which usually, though not always, chemically transforms it, thus changing its flavour, texture, appearance, and nutritional properties."
- "A **recipe** is a set of instructions that show how to prepare or make something, especially a culinary dish. Modern culinary recipes normally consist of several components:
 - The name (and often the locale or provenance) of the dish,
 - How much time it will take to prepare the dish
 - The required ingredients along with their quantity
 - Equipment and environment needed to prepare the dish
 - An ordered list of detailed preparation procedures (called Method).
 - The number of servings that the dish will give.
 - A rough estimate of the number of calories or joules contained per serving.
 - A note on how long the dish will keep and its suitability for freezing."

Cooks & Recipes



PMBok® Guide






PRINCE2™

Relationship to planning

- PMBOK® Guide does not provide a prescriptive approach for how products (deliverables) are described and then accepted once complete.
 - It does, however, describe a choice of 13 techniques for Quality Assurance/Control which a project manager could use.
 - For example Design of Experiments, Statistical Sampling, Inspection, Defect Repair Review.
- PRINCE2™ has a prescriptive approach to planning.
 - One of its sub-processes is ‘Defining and Analysing Products’.
 - It shows a sequence of three steps, the second of which is ‘Describe each of [the products] in terms of their quality requirements and ensure that they are fully understood and agreed by everyone involved’.
 - The output from this step is an agreed Product Description (PD).
 - PRINCE2™ does not provide any details on quality techniques which can be used, except for Quality Review.

Mine's better than yours!

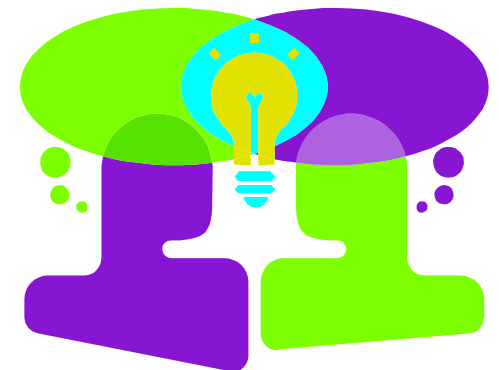
Area	PMBOK® Guide	PRINCE2™	Comments
Users	>200,000	>200,000	Snap
Pages	390	457	We'll let you decide which is better!
Processes	5	8	The additional processes in PRINCE2™ are for the project board (DP) for the project team (MP) and for pre-project activities (SU). PMBOK® Guide's processes are lifecycle processes which are different to the knowledge area processes (below).
Sub-processes	44	45	PMBOK® Guide's sub-processes are aligned to the Knowledge Areas (e.g. there are 5 sub-processes in the Knowledge area of Project Scope Management).
Knowledge Areas	9	8	PMBOK® Guide covers Procurement, HR and Communication which PRINCE™ does not. PRINCE2™ covers Business Case and Configuration Management which PMBOK® Guide does not.
Techniques	9 x several	3	The techniques are possibly the most valuable part of PMBOK® Guide. There are several techniques for each of the knowledge areas.
Role Definitions	0 defined 4 referenced	10	There are 4 roles referenced in PMBOK® Guide, but they are not defined
Products	0 defined 63 referenced*	36 defined 57 referenced*	* Referenced products are those shown as inputs or outputs to processes/sub-processes, e.g. SOW in PMBOK® Guide or Job Description in PRINCE2™

		
<p>PMBOK® Guide</p>	<p>Project Lifecycle Processes Linkage to Programmes Business Case Product Outlines</p>	<p>HR Procurement Communication Techniques</p>
<p>PRINCE2™</p>	<p>Techniques HR Procurement</p>	<p>Project Lifecycle Processes Linkage to Programmes Business Case Product Outlines</p>
<p>Both</p> 	<p>Need to agree Project Board v PMO structure</p> <p>Need to agree common dictionary</p>	

A new question



“How should we adopt PRINCE2™ if we are already aligned to PMI?”
Or
“Having adopted PRINCE2™, what can we do to improve our capability still further?”



“PRINCE2 describes what a project manager should do during a project – in other words, the steps he or she should follow to conduct a project on time, within budget and with minimum risk.

The PMI approach sets out what a project manager should know. It is focused on ‘standards for the practice of project management throughout the world’.”

Gartner 2002

- Contact Us
 - t +44 870 116 1293
 - f +44 871 750 3386
 - e info@outperform.co.uk
 - w www.outperform.co.uk

Acknowledgements

This document and its exhibits have been provided for evaluation purposes only and remain the property of Outperform UK Ltd; their contents should not be reproduced (in part or in whole) or disclosed to any third party without the express written permission of Outperform UK Ltd.

PRINCE® is a Registered Trade Mark of the Office of Government Commerce in the United Kingdom and other countries

PRINCE2™ is a Trade Mark of the Office of Government Commerce

The PRINCE2 Cityscape logo™ is a Trade Mark of the Office of Government Commerce in the United Kingdom and other countries

MSP™ is a Trade Mark of the Office of Government Commerce

M_o_R® is a Registered Trade Mark of the Office of Government Commerce in the United Kingdom and other countries.

The Swirl logo™ is a Trade Mark of the Office of Government Commerce

BPUG® is a Registered Trade Mark of Best Practice User Group Ltd

Best Practice User Group™ and the Best Practice User Group™ logo are Trade Marks of Best Practice User Group Ltd

Outperform™ is a Trade Mark of Outperform UK Ltd

® Capability Maturity Model, Capability Maturity Modeling, CMM, CMMI, SCAMPI and Carnegie Mellon are registered in the U.S. Patent and Trademark Office by Carnegie Mellon University.

Six Sigma™ is a registered service mark and trademark of Motorola, Inc.

Outperform UK Ltd

An Accredited Consulting Organisation

Improving Performance Through Best Practice
Bids, Projects, Programmes